

# Visual Basic Upgrade Companion Version 9.4 Release Notes

## New Resolve References Feature

Previously, if different versions of a reference with the same GUID, e.g., MSXML2, were used in different projects, a unique reference was added to the Resolve References tab with the highest version used across the multiple projects.

### Previous versions

#### Project1

```
Type=Exe
Reference=*G{00020430-0000-0000-C000-000000000046}#2.0#0#.....\WINDOWS\SysWow64\stdole2.tlb#OLE Automation
Reference=*G{F5078F18-C551-11D3-89B9-0000F81FE221}#3.0#0#.....\Windows\SysWOW64\msxml3.dll#Microsoft XML, v3.0
```

#### Project2

```
Type=Exe
Reference=*G{00020430-0000-0000-C000-000000000046}#2.0#0#.....\WINDOWS\SysWow64\stdole2.tlb#OLE Automation
Reference=*G{F5078F18-C551-11D3-89B9-0000F81FE221}#5.0#0#.....\Documents\RWA\OCXs\MSXML5.DLL#Microsoft XML, v5.0
```

#### Project3

```
Type=Exe
Reference=*G{00020430-0000-0000-C000-000000000046}#2.0#0#.....\WINDOWS\SysWow64\stdole2.tlb#OLE Automation
Reference=*G{F5078F18-C551-11D3-89B9-0000F81FE221}#6.0#0#.....\Windows\SysWOW64\msxml6.dll#Microsoft XML, v6.0
```

### VBUC Solution

Resolved	Name	Path	Friendly Name	Type	Version	Guid
✓	msxml6.dll	C:\Windows\System32	Microsoft XML, v6.0	External	6.0	{F5078F18-C551-11D3-89B9-0000F81FE221}
✓	stdole2.tlb	C:\WINDOWS\System32	OLE Automation	External	2.0	{00020430-0000-0000-C000-000000000046}

This issue was causing some compilation errors if the right Interop was not added to the project.

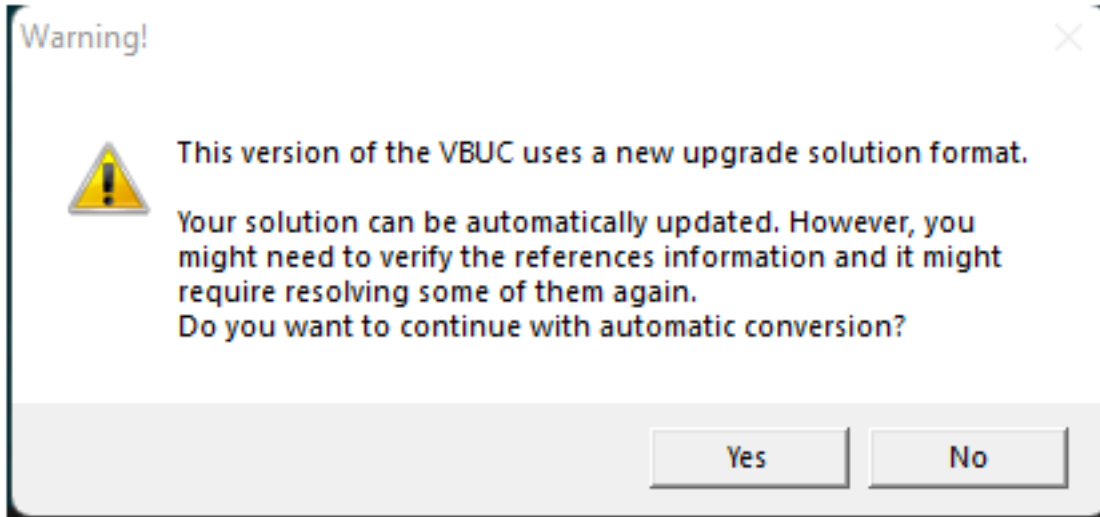
With version 9.4, the VBUC allows you to have multiple versions of a reference even if their versions are different; additionally, it will generate the proper Interop needed by each project.

Resolved	Name	Path	Friendly Name	Type	Version	Guid
✓	stdole2.tlb	C:\WINDOWS\System32	OLE Automation	External	2.0	{00020430-0000-0000-C000-000000000046}
✓	msxml3.dll	C:\Windows\System32	Microsoft XML, v3.0	External	3.0	{F5078F18-C551-11D3-89B9-0000F81FE221}
✓	MSXML5.DLL	C:\Users\cchevez\Documents\RWA\	Microsoft XML, v5.0	External	5.0	{F5078F18-C551-11D3-89B9-0000F81FE221}
✓	msxml6.dll	C:\Windows\System32	Microsoft XML, v6.0	External	6.0	{F5078F18-C551-11D3-89B9-0000F81FE221}

## Backward compatibility

When opening a VBUC solution created using a previous version of the tool a message will be shown to the user.

The VBUC solutions created using a previous version of the VBUC could be loaded using the new version, however, depending on the extent of manual changes when resolving references, some of them could not be applied properly. The suggestion is to create a new VBUC solution to let the tool to resolve the references using the new feature.



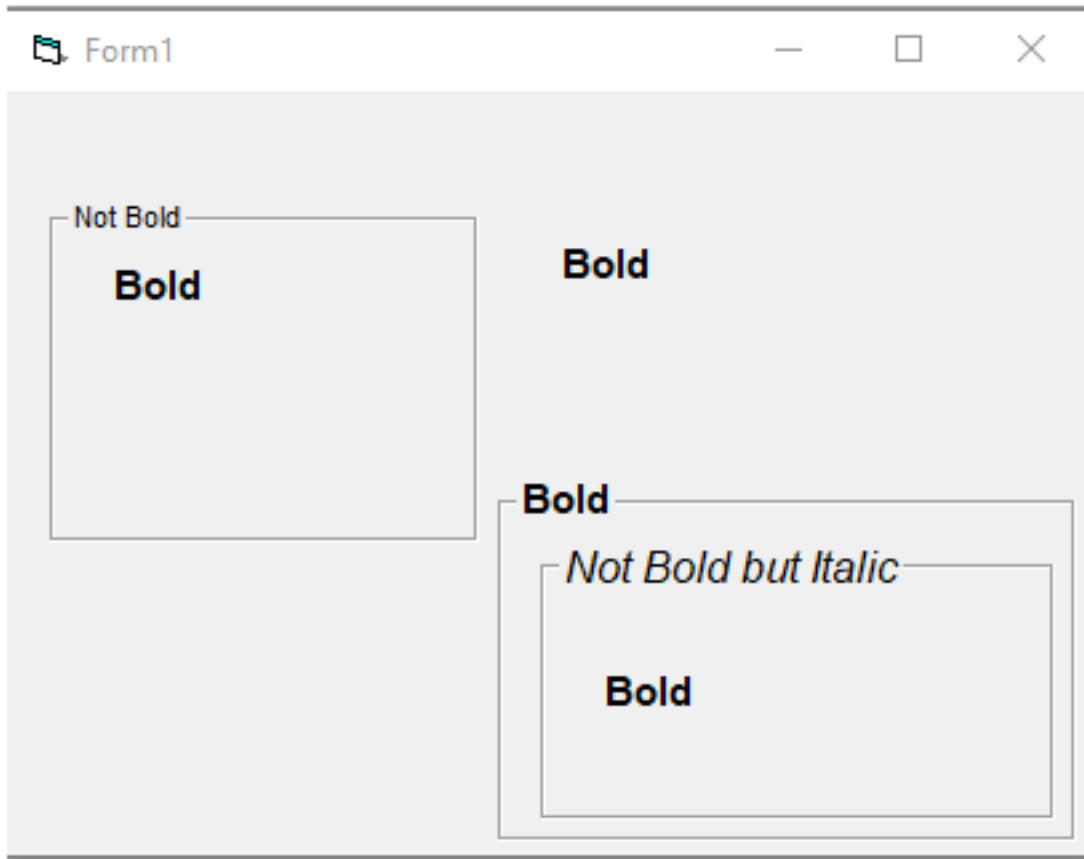
## Helper Projects

Previous versions added unnecessary helper projects to the converted application; with this version only the helper projects that are actually needed for the .NET application will be added.

## Font Behavior in VB6

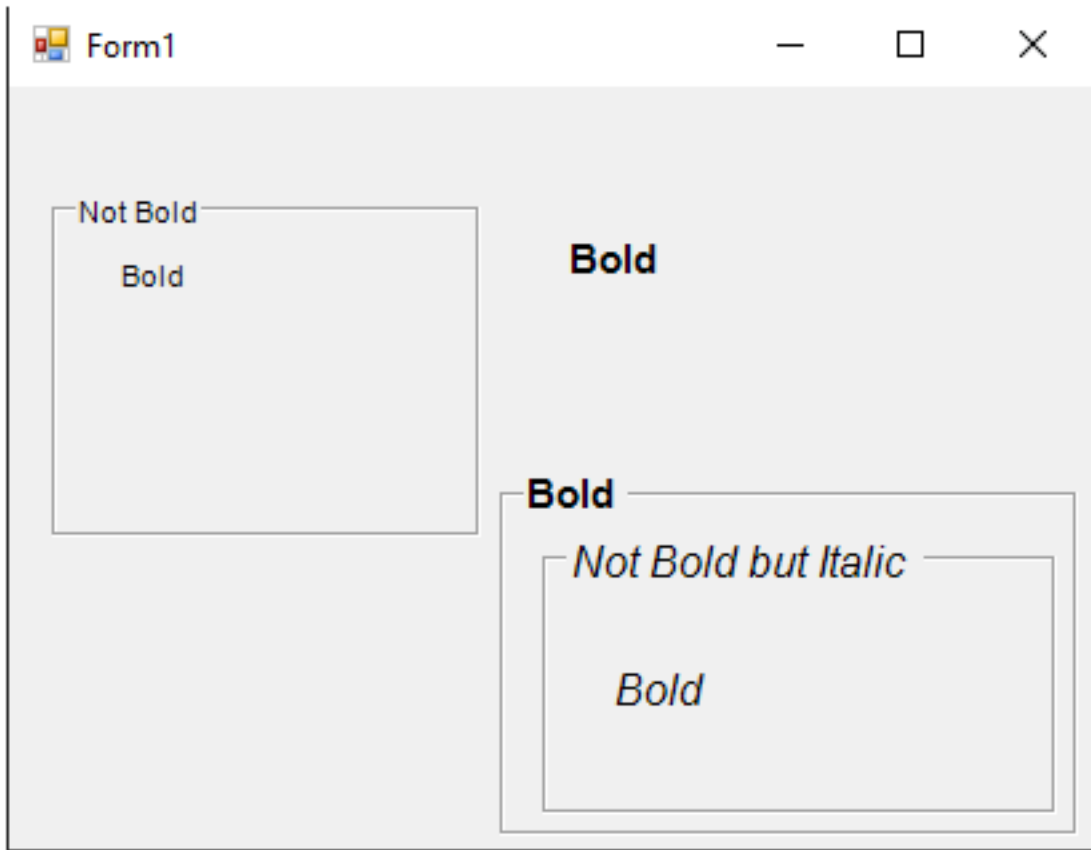
In a .NET application, if a control does not have the Font property specified it will inherit from its parent (Panel, Group Box, Picture Box, Form, User Control). In VB6, however, if a control does not have the Font property it will use the same used by its container (Form, User Control).

## Visual Basic 6

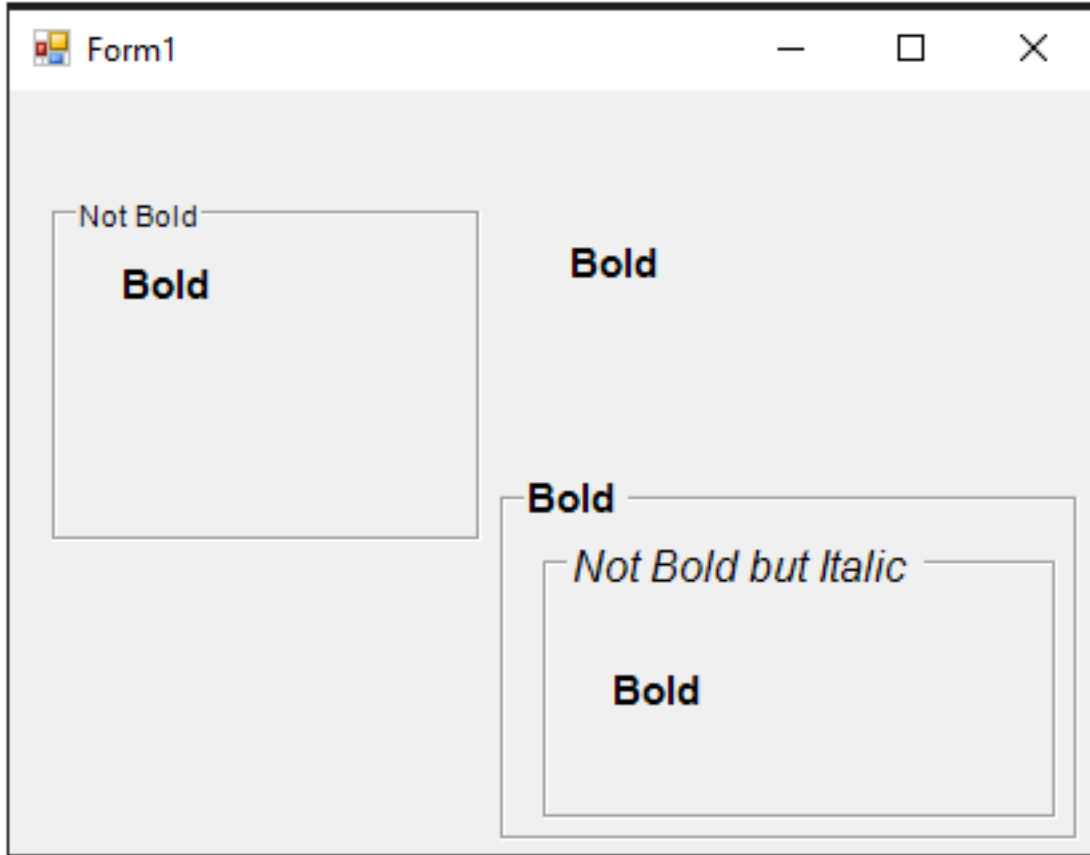


In previous versions, the Font behavior was the same as .NET:

## Previous version



With version 9.4 the Font property behavior will be the same as the VB6 application:



## Other improvements

- Additional cases for OCXState Generator
- Shared files improvements
- Databases mappings
- COM Interop improvements
- Microsoft controls mappings
- UpDown control mappings
- Helpers unit tests code coverage increased